

Department of English

Link for Tests given to identify learning levels:

https://docs.google.com/forms/d/e/1FAIpQLScQZJNW5qYeYjb0-MfudPz2h1tC1lhaD8kh2BmRISIEYww8Wg/viewform?usp=sf_link

https://docs.google.com/forms/d/e/1FAIpQLSd1NIaAWULIC7U9uIR8GS2P3tSWhPpUoZdTwQudFj5jUyS8tA/viewform?usp=sf_link

Based on the results, the weak and advanced learners were identified for further action to improve the academic performance.

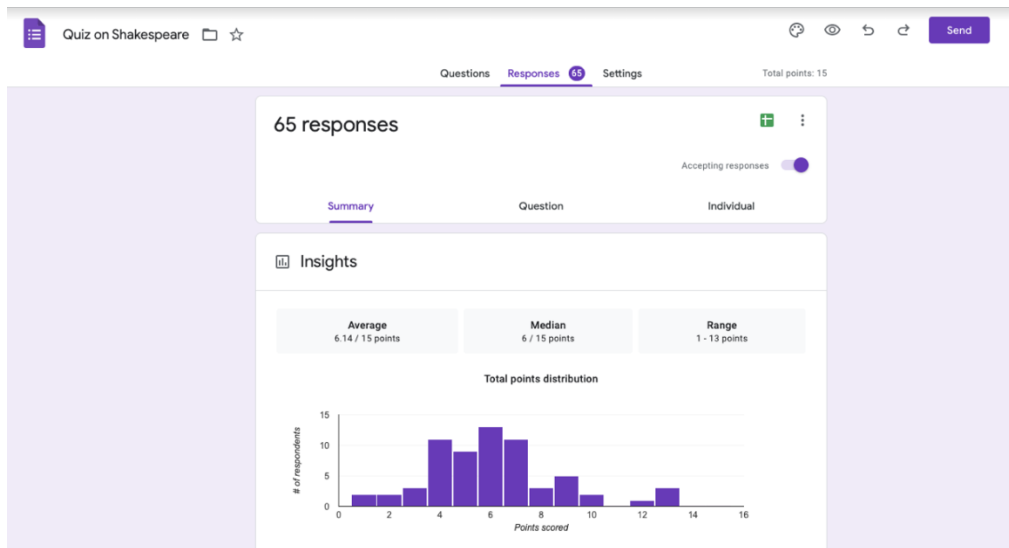
B. A. ENGLISH 2021-22

ADVANCED LEARNERS

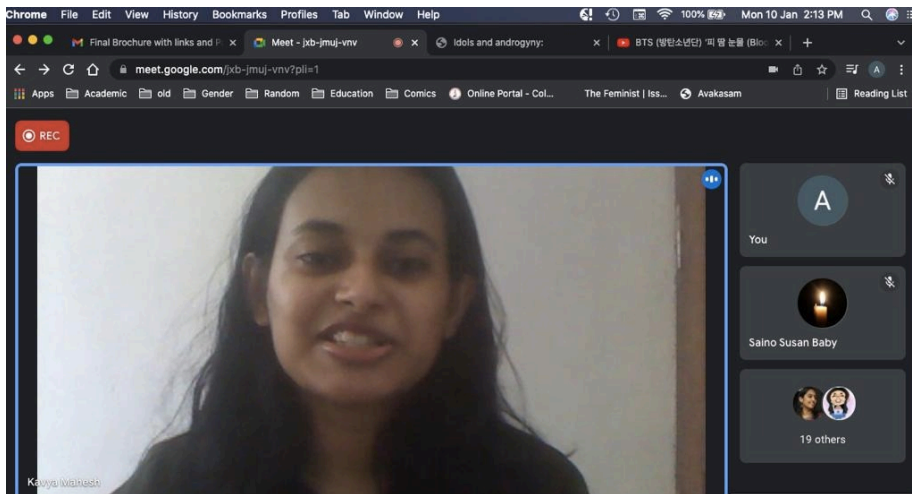
1. Arundhati Nirmal
2. Chitrangadha K.P.
3. Nayanthara Thilak
4. Sneha Prasad P.
5. Nandana Jayaprakash
6. Chandana Sunil

SLOW LEARNERS

1. Aswini Suresh Babu
2. Divya P.
3. Nandana D.S.
4. Vismaya
5. Fathima Fida
6. Rubaiha C.N.



Participation of advanced learners in competitions conducted by external agencies:



Alshifa Project Prize '22

Winners

ENGLISH

I st Prize	II nd Prize	III rd Prize
Fathima Thasneem. A Farook College (Autonomous) Calicut	Minhaj Hassan. P DGM MES Mampad College (Autonomous)	Ruby Sherin Providence Women's College Calicut

AL SHIFA COLLEGE OF ARTS & SCIENCE
 (Run by Shifa Medicare Trust & Affiliated to University of Calicut)
 Keezhattur, Perinthalmanna. Ph: 04933 271 367, 9446 544 473
 www.alshifacollegeofartsandscience.ac.in | info@alshifacollegeofartsandscience.ac.in

A Different League!